



## TR-7xW Web Enabled Data Loggers

TandD's line of web enabled TR-7xW data loggers provides outstanding functionality in a compact and cost effective package. Based on the time tested TR-7U designs, these models each incorporate TandD's proprietary ProDigio micro web server chipset. Totally unique in today's

marketplace, these ultra-reliable loggers interface directly to a local area network, through either a standard 10/100 Base-T Ethernet or through an 802.11b wireless LAN connection. This capability allows for direct viewing or downloading of data from anywhere on the network, or via the internet. The TR-7W can even send warnings directly to a cell phone or other e-mail address whenever preset limits are exceeded.

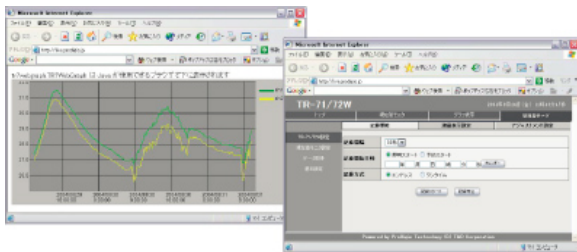


### Wireless LAN Connectivity

The TR-7xW models connect directly to a local area network. The standard connection method is to a 10/100 Base-T wired Ethernet through the integrated RJ-45 connector. This permits direct access to current readings and downloading of logged data from any PC on the LAN. The units also support an 802.11b wireless LAN connection through the use of an optional Compact Flash adapter card. This allows for unprecedented flexibility in device placement, network configuration and data collection and monitoring capability.



### Built In Web Server



Incorporating TandD's proprietary ProDigio web server chipset, the TR-7xW products contain an HTTP server for device connectivity to the web. This permits device configuration, reading of current values or downloading of logged data with a standard web browser from any PC connected to the internet, anywhere in the world. Recorded data can be viewed in either tabular or graphical format. Of course, device access is ID and password controlled. These units also have a built in SMTP function that allows current readings to be e-mailed to up to 5 different addresses whenever measured values exceed settable limits.

Incorporating TandD's proprietary ProDigio web server chipset, the TR-7xW products contain an HTTP server for device connectivity to the web. This permits device configuration, reading of current values or downloading of logged data with a standard web browser from any PC connected to the internet, anywhere in the

## TR-71W



The TR-71W is a two-channel temperature data logger capable of storing 8,000 readings for each channel. The sampling rate can be set to any of 15 intervals, from once per second to once per hour, in either two recording modes. In one time mode the unit will take readings until the memory is full and then stop. In endless loop mode the unit will “wrap around” in memory once it is full and overwrite the

oldest data. The TR-71W ships with external sensors that can record temperatures from -40 °C to 110 °C, however optional sensors are available that extend the measurement range to -60 °C to 155 °C.

## TR-72W

The TR-72W is a two-channel combination temperature and humidity data logger. Offering the same capacities and settings as the TR-71W, and in addition to measuring temperature from 0 °C to 50 °C, this model will also measure and record relative humidity from 10% to 95%. In addition to the standard sensor pictured here, TandD also makes available as an option a sensor with a 1-meter cord and several extension cables. These



devices utilize an A/C Adapter for power while connected to a network, and utilize a lithium back up battery which will preserve recordings for up to 3 months.

The TR-71W and TR-72W can even be user calibrated by programming either a one point or two point adjustment factor, which is internally applied to all displayed and recorded data.

## Quick Specs

Data Capacity of Loggers:	16,000 Samples (8,000 per Channel)
Sampling Rate:	1 per second (max) to 1 per hour (min)
Recording Method:	One time or Endless Loop
Calibration:	User adjustable w/ software
Connectivity:	10/100 Base-T Standard, 802.11b Optional
E-Mail Warning Messages:	Up to 5 Separate Addresses
Temperature Range:	-60 °C to 155 °C w/ Optional Sensor
Humidity Range:	10 to 95% RH

### T and D Representative Office Europe

Phone: +49(6034) 930970 Fax: +49(6034) 930971 E-Mail: [tandd@gmx.net](mailto:tandd@gmx.net)