

JE22 (JMX-22F)

HIGH POWER LATCHING RELAY



Pending



Features

- 100A switching capability
- Strong resistance ability to shock & vibration
- Heavy load up to 27.7KVA
- 4KV dielectric strength (between coil and contacts)
- Micro switch on mounting board available
- Environmental friendly product available (RoHS compliant)
- Outline Dimensions: 60.0 x 40.0 x 21.0 mm

CONTACT DATA

Contact arrangement	1A
Voltage drop (initial) ¹⁾	Typ.: 50mV (at 10A) Max.: 250mV (at 10A)
Contact material	AgSnO ₂ , AgCdO
Contact rating (Res. load)	100A 277VAC/28VDC
Max. switching voltage	440VAC
Max. switching current	100A
Max. switching power	27700VA / 2800W
Mechanical life	1 x 10 ⁵ OPS
Electrical life	2 x 10 ⁴ OPS

CHARACTERISTICS

Initial insulation resistance	1000MΩ (at 500VDC)	
Dielectric strength	Between coil & contacts	4000VAC 1 min.
	Between open contacts	2000VAC 1 min.
Creepage distance	8mm	
Operate time (at nomi. volt.)	Max. 20ms	
Release time (at nomi. volt.)	Max. 20ms	
Shock resistance	Functional	98m/s ²
	Destructive	980m/s ²
Vibration resistance	10 to 55Hz 1.0mm DA	
Humidity	98% RH, +40°C	
Ambient temperature	-40°C to +70°C	
Termination	PCB & QC	
Unit weight	100g	
Construction	Dust cover	

COIL

Coil power	Single Coil: 2.4W; Double Coil: 4.8W
------------	--------------------------------------

COIL DATA ²⁾

Nominal Voltage (VDC)	Pick-up Voltage (VDC)	Pulse Duration (ms)	Coil Resistance (Ω)	
6	4.8	200	Single Coil	16±10%
12	9.6	200		60±10%
24	19.2	200		250±10%
48	38.4	200		1000±10%
6	4.8	200	Double Coils	(2 x 8)±10%
12	9.6	200		(2 x 30)±10%
24	19.2	200		(2 x 125)±10%
48	38.4	200		(2 x 500)±10%

1) Equivalent to the max. initial contact resistance is 50mΩ (at 1A 24VDC), and measured when coil is energized with 100% nominal voltage at 25°C.

2) When requiring other nominal voltage, special order allowed.

Notice

1. Relay is on the "set" status when being released from stock, with the consideration of shock risen from transit and relay mounting, relay would be changed to "reset" status, therefore, when application (connecting the power supply), please reset the relay to "set" or "reset" status on request.
2. In order to maintain "set" or "reset" status, energized voltage to coil should reach the rated voltage, impulse width should be 5 times more than "set" or "reset" time. Do not energize voltage to "set" coil and "reset" coil simultaneously. And also long energized time (more than 1 min) should be avoided.
3. The terminals of relay without twisted copper wire can not be tinsoldered, can not be moved willfully, more over two terminals can not be fixed at the same time.



HONGFA RELAY

ISO9001、ISO/TS16949、ISO14001、OHSAS18001 CERTIFIED

2006 Rev. 1.20

ORDERING INFORMATION

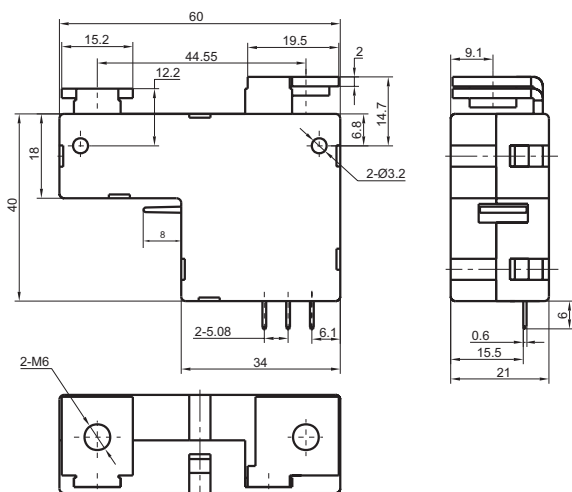
JE22		-A /		12		-H		1		L		T		B		-2		1		-R		XXX	
Type																							
Version	A: Type A contact terminal B: Type B contact terminal C: Type C contact terminal																						
Coil voltage	6, 12, 24, 48VDC																						
Contact form	H: 1 Form A																						
Coil terminal type	1: Type 1 2: Type 2																						
Coil power	L: Sensitive Nil: Standard																						
Contact material	T: AgSnO ₂ Nil: AgCdO																						
Insulation standard	B: Class B F: Class F																						
Sort	1: Single side stable											2: 2 coils latching											
Mounting board form	1: Without micro switch											2: With micro switch											
Polarity	R: Negative polarity Nil: Positive polarity																						
Customer special code (Only for special requirements)	e.g. 551 stands for RoHS compliant (Cadmium containing contacts) 555 stands for RoHS compliant (Cadmium-free contacts)																						

OUTLINE DIMENSIONS, WIRING DIAGRAM AND PC BOARD LAYOUT

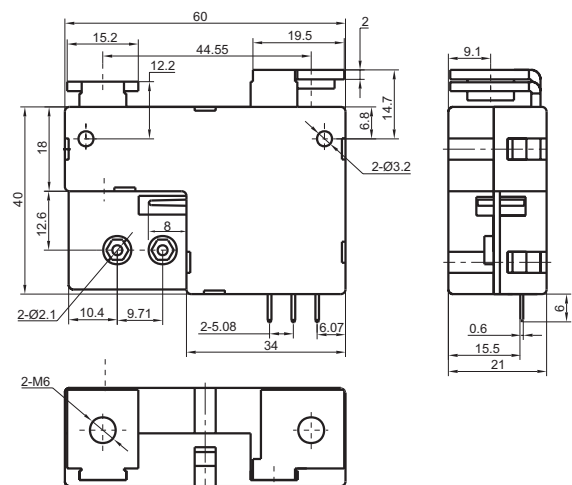
Unit: mm

Outline Dimensions

Type A contact terminal, Without micro switch



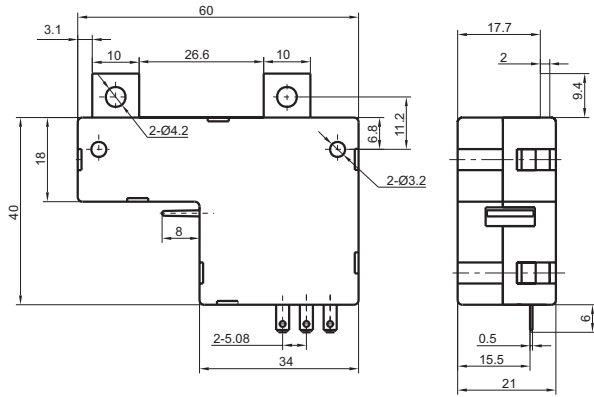
Type A contact terminal, With micro switch



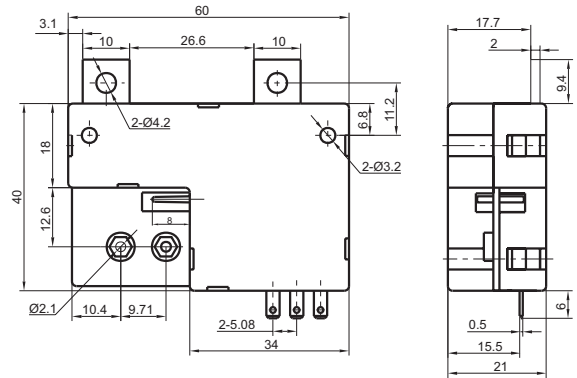
OUTLINE DIMENSIONS, WIRING DIAGRAM AND PC BOARD LAYOUT

Unit: mm

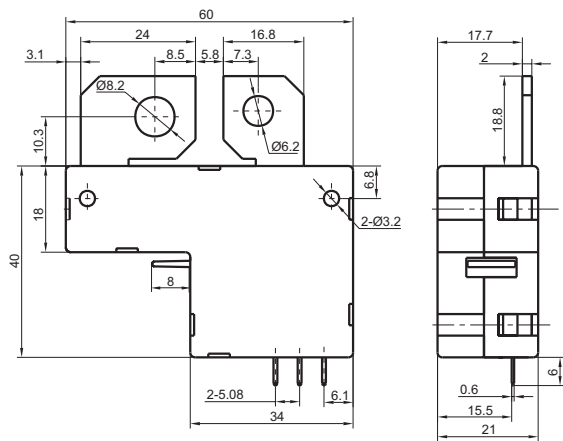
Type B contact terminal, Without micro switch



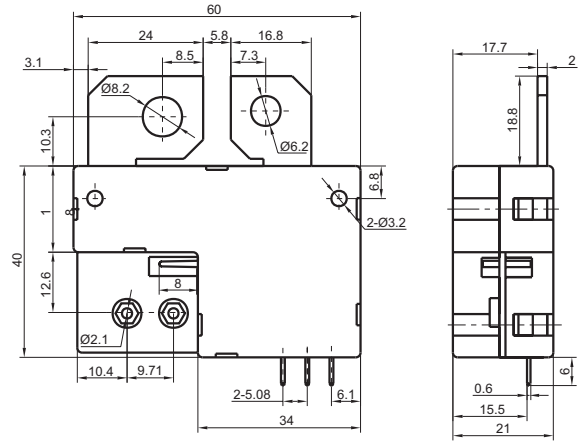
Type B contact terminal, With micro switch



Type C contact terminal, Without micro switch



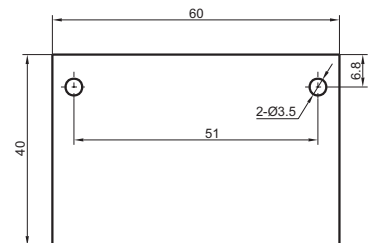
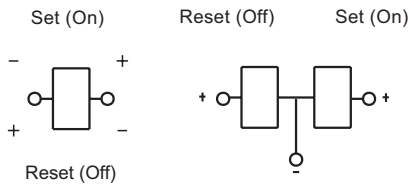
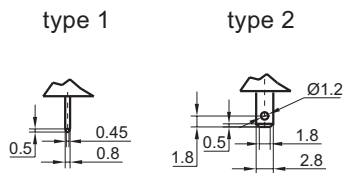
Type C contact terminal, With micro switch



Coil Terminal Type

Coil Wiring Diagram

PCB Layout



Disclaimer

This datasheet is for the customers' reference. All the specifications are subject to change without notice.

We could not evaluate all the performance and all the parameters for every possible application. Thus the user should be in a right position to choose the suitable product for their own application. If there is any query, please contact Hongfa for the technical service. However, it is the user's responsibility to determine which product should be used only.